



**NATIVE
EDUCATIONAL GATEWAY
PRIVATE LIMITED**



**Learning Today
Leading Tomorrow**





بِسْمِ اللَّهِ الرَّحْمَنِ الرَّحِيمِ

الْحَمْدُ لِلَّهِ رَبِّ الْعَالَمِينَ • الرَّحْمَنِ الرَّحِيمِ •

مَالِكِ يَوْمِ الدِّينِ • إِيَّاكَ نَعْبُدُ وَإِيَّاكَ نَسْتَعِينُ

• أَهْدِنَا الصِّرَاطَ الْمُسْتَقِيمَ •

صِرَاطَ الَّذِينَ أَنْعَمْتَ عَلَيْهِمْ

غَيْرِ الْمَغْضُوبِ عَلَيْهِمْ

وَلَا الضَّالِّينَ •



بِسْمِ اللَّهِ الرَّحْمَنِ الرَّحِيمِ

رَبِّ زِدْنِي عِلْمًا

And Say: Oh Allah, Increase me in Knowledge.

Executive Advisory Board

Mian Muhammad Ilyas	Chairman Advisory Board
Mian Tajamal Ilyas	CEO (Mughal e Azam)
Salman Maqsood	M.D. Kips
Gulzar Ahmad	Standard Grammar Schools
Ikram Khan	Khaliqia Foundation Schools
Mrs. Ayesha Hamid	American School
Zeeshan Zia Raja	American Lycetuff
Syed Shuja Ul Hassan	Hassan Memorial Schools
Qazi Naeem Anjum	Qazi Apex Grammar Schools
Dr. Nadeem Sahar	Dawn School System
Shahid Noor	Najaf Grammar Schools

Mian Fazal-ur-Rahman (Late)

Pioneer Member/Ex-Chairman

Mrs. Tahira Fazal-ur-Rahman (Late)

Pioneer Member / Ex Chairperson

Board of Directors

Mian Atif-ur-Rahman

C.E.O / Director

Mian Riza-ur-Rahman

Director Admin/Project Director

Ms. Samia Rahman

Director Academic

Mrs. Maryam Atif

Director

Mrs. Maria Riza

Director

Executive Directors

Mrs. Ghazala Yasmin

Mrs. Aasia Kanwal

Mr. Muhammad Tariq

M.Sc. Physics PU

Mr. Salik Sultan

B.Sc. Computer Sciences (USA)

Mr. Asad Sultan

B.S. (USA)

Mr. Abdullah Farooq

B.S. (USA)

Technical Advisors

Native School Crafts



Man of Vision, Mission & Devotion
 for Humanity
 A Pioneer Personality

Mian Fazal ur Rahman (Late)
Founder: Native Group

Native School System



Native Educational Gateway Pvt. Ltd.

Native Schools



Serving Schools Foundation



Native Steel Corporation



Shan-e-Insan, Monthly



School Carfts



Native ArtZone Publications



Native Colleges





ESTABLISHMENT



Mr. Fazal-ur-Rahman, Mrs. Tahira Fazal-ur-Rahman and their devoted companions laid the foundation of **NATIVE SCHOOL SYSTEM** in March 1981 at Davis Road, Empress Road, near Shimla Hill in Lahore under the supervision of **Native Public Society** now known as **Native Educational Gateway Private Limited**. It was inaugurated on 17th of April, 1981 by Lieutenant General (rtd.) M.H. Ansari who was the Director General of L.D.A at that time.

In 1982, institute got registered with Education Department, Lahore, under the name of Native Middle School. In 1984, a separate branch for girls had been established at Empress Rd. Furthermore, in 1984 as a result of Punjab Private Educational Institutions Ordinance, separate schools for girls and boys were registered from the Directorate Education, Lahore.

Since then Native Institutions are officially registered and recognized with the Board of Intermediate and Secondary Education Lahore and Native Educational Gateway Private Limited is also registered under the Companies ordinance and holds its trademark under the ordinance, holding all its rights.

Since 1981 Native School System has developed 13 campuses in different vicinities of Lahore. Moreover, thousands of students have accomplished their school education from Native and made themselves part of other leading institutions across Pakistan for higher education to achieve goals of their life.

Native Educational Gateway Pvt. Limited has launched the proprietary mark **NATIVE SCHOOLS** based on academic and strategic partnership between **Native Educational Gateway Private Limited** and our Network Associates as licensees having the right to use, in connection with the school operations.

WORDS FROM CEO

Education is an unending and ongoing process. One has to keep the mind within humanity to learn.

On assuming the office as CEO of the prestigious institution. I convey my immense pleasure in getting an opportunity to work and fruitfully interact with all members of staff, students and their parents. In recent years the Native School System has grown abundantly in its size and stature. It is our solemn duty and responsibility to ensure that purposeful education training of a high standard is imparted to our students to equip them to complete for various careers and course of choice in years to come and comprehensive administrative facilities with in available resources are made available to all for shaping up the institution towards attainment of our cherished goals.

I ensure, to the best of my ability for selfless contribution towards the noble cause of building up the institution for all round growth and development of its children. To bring up the school comparably at par with other schools of repute, calls for wholehearted dedication on the part of students, staff members as well as everyone associated with the school. Let us therefore remember that:

“To get together in the beginning;
To stay together in progress;
To work together in success”

Mian Atif ur Rahman
CEO



WORDS FROM PROJECT DIRECTOR



The purpose of the foundation of this institute was to provide education to the Nation's young generation in the best educational environment and recreational facilities according to the demands and needs of modern time, to make education interesting for the children by passing them through vigorous practical work and group work to develop their intellect, and finally to develop a deep devotion among students for Islamic ideas, national values and love for our country so that they will be able to brighten their future and as a result brighten the future of our country.

Along with academic activities great encouragement is given to the students in the field of co-curricular activities. Throughout these years, the interest and spirit of the students are kept up with the engaging competitions like sports, quiz, painting, interclass debate and speech competitions etc. At present, the overall performance of the school is excellent at per I feel proud to mention here that our school is counted among the best schools of the Lahore Town. *(Al-Hamd-O-Lilah)*.

Last but not the least, I would like to add that the secret of the success of Native School System is the hard work of the dedicated teachers, the fruitful guidance of the honorable board of Directors, Principals, Understanding and cooperation of the parents, the interest and enthusiasm of the students and above all the blessings of Almighty Allah & prayers of respected Mr. Mian Fazal-ur -Rahman (Late) and Mrs. Tahira Fazal. (Late).

Mian Riza-ur-Rahman
Project Director

WORDS FROM DIRECTOR ACADEMICS

The broad and balanced curriculum will stimulate your child to acquire knowledge and develop individual skills.

We encourage children to become independent and confident in both their work and social development by acquiring knowledge and understanding the ideas of life to be a perfect human being.

The children are taught to develop good attitude towards the others and also perfecting their inner skills to better understand the world and social phenomena by their own class teacher in mixed ability classes with children of approximately the same age.

In this modern and challenging era children make progress at their own rates and in their own ways. It is important to value them as individuals and to provide learning opportunities that will build on their strengths and overcome their weakness.

Our curriculum is broad and balanced and provides for the academic, moral, physical, creative, personal and social development of every child.

Samia Rehman

Director Academics (Juniors)





OUR SERVICE & SUPPORT

Native Educational Gateway Private Limited aims to develop a network of quality schools offering standardized education through network alliances all over Pakistan. Those who want to have the franchise of Native Schools under an agreement based license from Native Educational Gateway Private Limited, shall pay the Network Association License Fee (Franchise Fee) and monthly service charges to receive the following services and support. However, the services and support shall start flowing from the Native Educational Gateway Private Limited offices only after the Association Agreement is signed.

Area Selection.

Unless you already have an appropriate building of your own with no Native School in Certain radius, we will help you in selecting area for your campus, it may be purpose build or in a rented building.

Architectural Advice and Support

We will provide you a School specific building plan if you want new construction. The minimum land required is 2 Kanal for Primary (Playgroup to V) and 3 Kanals or more for a comprehensive school. For renovation or refurbishing, we may refer experts if requested.

Moreover.....

- * Complete Guidance, Solution and infrastructure for school setup.
- * Complete Curriculum Guidance with advance learning techniques.
- * Faculty Training with advance Classroom management skills
- * Marketing and Advertisement Techniques.
- * Faculty Recruitment
- * Support in Examination system.
- * School management Computer Software System
- * Guidance for school registration and legal matters of different concerned departments.



BENEFITS OF INVESTMENT IN FRANCHISE



Education is the most important and developing sector all over Pakistan . People need quality education with affordable fee structure. To fulfill the current needs of education for people, investment in Education sector provides business horizons for people looking to enter the business arena.

- * Investment in Pre running business is also a way to secure the investment with higher success rates.
- * Investing in Brand is always a success story, Native Schools is a renowned as a leading name in imparting education to generations.
- * Native offers continuous support to their allays in terms of setting up the institution, business, educational system, school management system, marketing, advertisement and faculty training.
- * Get experience with experienced people.





HIGH EXPECTATIONS HIGH ACHIEVEMENTS



The broad and balanced curriculum will stimulate your child to acquire knowledge and develop individual skills.

Children's achievements are celebrated and everyone enjoys success and praise regularly during their time in school. We encourage children to become independent and confident in both their work and social development.

The children are taught by their own class teacher in mixed ability classes with children of approximately the same age. There is one class per year group that takes up to 20 children. The staffing complement for each class in Montessori Section is fully qualified teacher and trained teaching assistant.

The Class teacher will get to know your child very well and will be pleased to involve you in their life at school. Children make progress at their own rates and in their own ways. It is important to value them as individuals and to provide learning opportunities that will build on their strengths and overcome their weakness. The curriculum is broad and balanced and provides for the academic, moral, physical, creative and personal and social development of every child. In our institution today we recognize that learning consists of:

- Acquiring knowledge

- Understanding ideas

- Perfecting skills

- Developing good attitudes

In order for this to take place the children must:

- become involved with things that interest them

- Be encouraged to work with each others

- Make progress and be challenged in each area of learning

- become independent

The National curriculum programs of study are divided into key stages.

OUR EXPERIENCE OUR STRENGTH

Native School System has the privilege to produce its own Research Based Books for (Pre-primary) Playgroup, Nursery, Pre level.

The Syllabus for Class One to Class VIII consist of Creative textbooks and allied material developed by the leading publishers in line with National Curriculum. At Secondary level, however, the syllabus prescribed by the relevant Board of Intermediate & Secondary Education are followed.

Special emphasis on spoken English, linguistic, creative activities , art & drawing are the hallmarks of Native School System Curriculum. Medium of Instruction is English.

At Native Schools co-curricular activities are designed as an active and integrated part of the curriculum. Co-curricular activities are aimed to develop social, moral, religious & physical development of children.



POST-AGREEMENT CONSULTANCY BRIEF



As soon as the Association Agreement is signed, the document entitled "Post-Agreement Constancy Brief" will be handed over to the Network Associate. It contains the following precise information:

- School Configuration
- Operation Schedule for Refurbished School
- Operation Schedule for Purpose Built School
- Area Distribution within School Premises (Primary)
- Area Distribution within School Premises (Comprehensive)
- List of Furniture, Fixtures, and Equipment for School Operation
- Furniture: Source of Supply and rate List
- Curriculum Booklist
- Uniform (Description, Source of Supply and Rate List)
- Native School System Sign-age and Corporate Colors

Selection & Training

Selection of Principals and Teachers: Native School System head office supports the process of selection of principals and teachers.

Pre-Operational Training: Native School System head office also arranges short orientation courses for network associates, principals and teachers.

Continuous Professional Development of Teachers: Native School System has an ongoing school-based system of teacher development.

Continuous School Improvement: NEG head office ensures continuous school improvement through regular School evaluation followed by advisory brief.

The Manuals

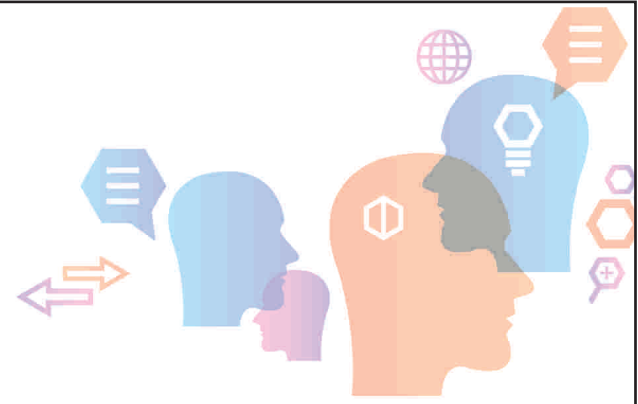
In order to ensure smooth functioning of schools, Native Educational Gateway Private Limited head office issues comprehensive manuals in the areas of academics, administration, finance and preschool.

School Emblem, Sign-age and Marketing

School Sign-age: Specimens of all standardized sign-age of Native Schools are given to the network associates on signing the Association Agreement.

Advertisement & Marketing

Centralized marketing is carried out for admissions as well as for brand promotion. Network Associates are also provided guidance and support in local marketing.



IF YOU ARE INTERESTED IN FRANCHISE

Step 1.

Contact us, get the initial and essential information, have an appointment and visit Native Educational Gateway Private. Limited Head Office to discuss your plan in all aspects.

Step 2.

Sign a Memorandum of Understanding (MOU) on full payment of the franchise fee. You may get that specific area mentioned in the MOU where you are interested to operate your school. By signing the MOU, you will:

- 1) reserve your right to operate Native Schools franchise in the desired area.
- 2) be allowed to use the Native Schools name while your building under construction or renovation.
- 3) be eligible to ask Native Educational Gateway head office for the architectural advice and support if required.

Step 3.

As soon as your building is acquired, you must sign the Association Agreement. You can then have meetings with our authorized uniform and furniture vendors. However, the Agreement should be signed at least about three months before the school gets operative.

Step 4.

School staff is now hired through centralized newspaper advertisement and selection by the Native head office.

Step 5.

Native Educational Gateway head office shall undertake the admissions campaign and also impart necessary orientation to the Network Associates, the principals, and the teachers. Hence, the school will take off in full gear. In Sha Allah - Good luck.





REVENUE PARAMETERS

Network Association License Fee:

Rs. 0.7 million for Primary School (Including Pre-School)
Rs. 1.0 million for Comprehensive School (Playgroup to X)

Royalty:

Monthly service Charges per student: Rs: 250/-

Monthly Tuition Fee:

Applicable at the time of signing the agreement

Admission Fee:

Rs. 5000/-

Student Security Deposit (Refundable):

Rs. 2000/-

NATIVE COLLEGE

Moving Up..... (Insha Allah)

Aiming for Excellence To provide an Institute (College) within which all our pupils feel valued and able to achieve personal excellence in all aspects of life.

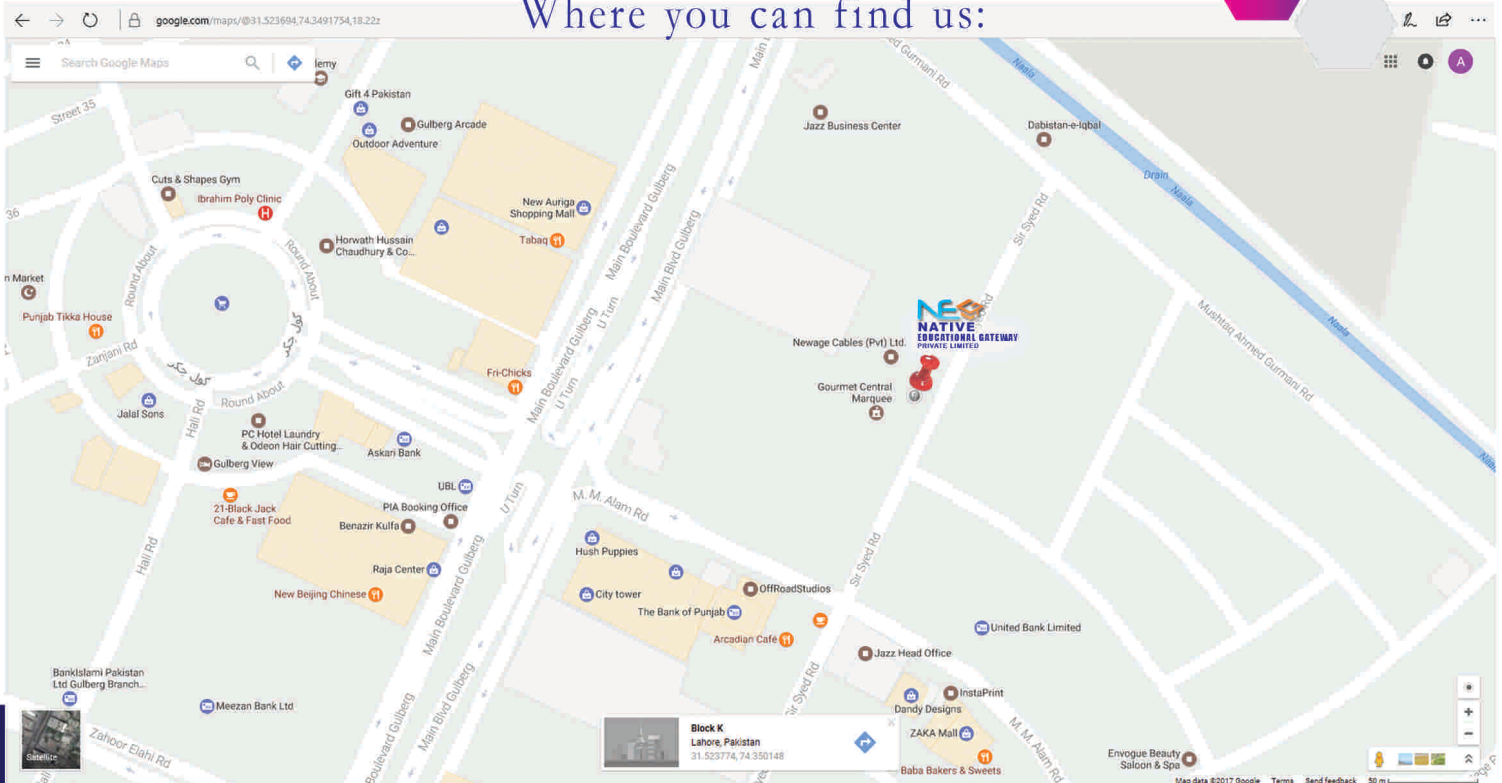
We aim to do this by:

- delivering a curriculum, which meets the needs of all in a manner that stimulates, challenges, excites and encourages each pupil to question and enjoy the opportunities available to them.
- promoting physical fitness and creativity together with a positive attitude to maintain a healthy lifestyle.
- developing self-confidence, self-esteem and personal responsibility, recognising the importance of human relationships based on understanding, tolerance and respect. We value our community and seek to involve staff, pupils and parents in a positive and effective partnership through:
 - the provision of a secure, caring and stimulating environment, which will develop positive attitudes and sound relationships both within the College and the wider community.
 - social awareness, a concern and feeling for others and to promote professionalism, kindness, honesty and integrity.
 - the provision of equality of opportunity for all students through diversity of learning and an extra curricular experience that widens their opportunities and awareness.
 - the promotion of a strong partnership between the home and College. • recognising and celebrating personal and collective success.





Where you can find us:



Corporate Office:
 32/1, K Block, Sir Syed Road,
 Gulberg II, Lahore - Pakistan
 Ph: 0423-5778611-12
 Cell: 0320 9444474

Web:
www.native.edu.pk
Email:
riza@native.edu.pk
info@native.edu.pk
franchise@native.edu.pk



**NATIVE
EDUCATIONAL GATEWAY
PRIVATE LIMITED**

Corporate Office:
32/1, K Block, Sir Syed Road,
Gulberg II, Lahore - Pakistan
Ph: 0423-5778611-12
Cell: 0320 9444474

Web:
www.native.edu.pk
Email:
riza@native.edu.pk
info@native.edu.pk
franchise@native.edu.pk